

INFINITE FITTING  
BASINS BY BRUCE TOMB

1240 VALENCIA  
SAN FRANCISCO  
CALIFORNIA 94110  
PHONE 415-970-9210  
FAX 415-970-1492  
EMAIL info@infinitefitting.com  
www.infinitefitting.com

## SPECIFICATIONS

### IF BASIN

Dimensions:  
±18 inches diameter x ± 6 inches overall depth.

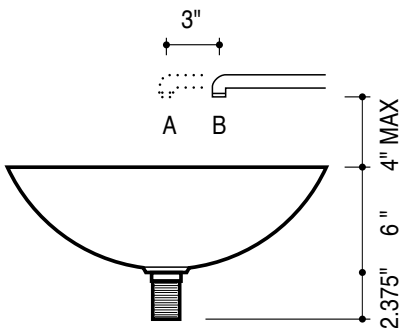
Basins can be specified with either X, O, O-4 or O-9 drain details. (see back)

Tailpiece Dimensions:  
1-1/4 NPS x 2-3/8 inches long with 1-1/2 inches of outside thread.

Threaded length is for securing the basin from under a counter top or bracket.  
Stainless steel tailpieces are standard. Custom tailpiece lengths can be special ordered. Hardware to attach basin to 1-1/4" diameter waste plumbing is included with each shipment.

The inside of the IF Basin naturally tarnishes and darkens with use, which is characteristic of the materials used and their exposure to water and air. Minerals from hard water may form deposits in the bowl however, most can be maintained by following the Care + Maintenance suggestions provided. INFINITE FITTING  does not recommend the aluminum material for areas with hard water, the bronze materials are more suitable for those areas where water quality is questionable. Slight imperfections or "pitting" on the (inside) surface are inherent to the casting  of the basin, and are considered normal.

The IF Basin and the IF Wall Bracket can be special ordered for ADA  compliant installations.



### **BASIN - Side View and Spout Placement**

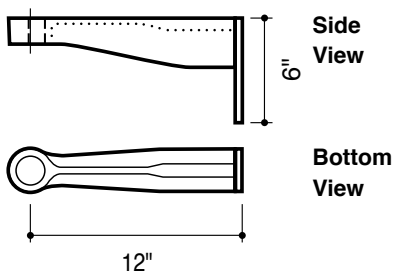
The ideal spout for this basin is a swing-type spout which would be centered over the drain, and can swing out of the way when rinsing one's face. For fixed spout installations, the water should hit approximately 3 inches back from the drain opening. An aerator should be specified for all spouts.

Alternate locations recommended for a swing spout (A) or a fixed spout (B).

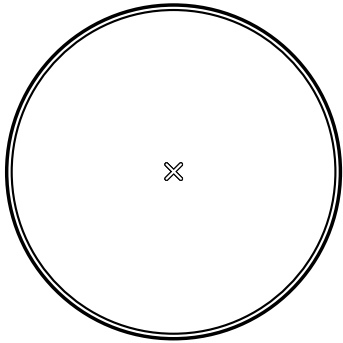
### IF Wall Bracket

Dimensions:  
12 inches long x 2-7/16 inches wide x 6 inches high (mounting plate).

The IF Wall Bracket is sand cast from aluminum, white bronze, or silicon bronze, and developed to work with all of the IF Basins, matching the texture of the IF Basin exteriors. The IF Wall Bracket works well to securely support the IF Basin off the wall, without having to rely on a counter top.

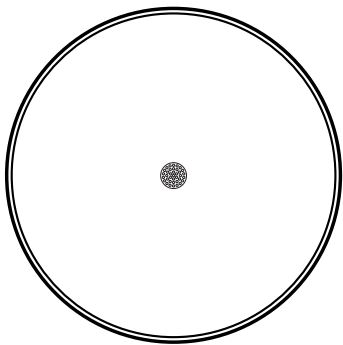
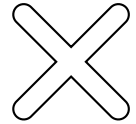


18"



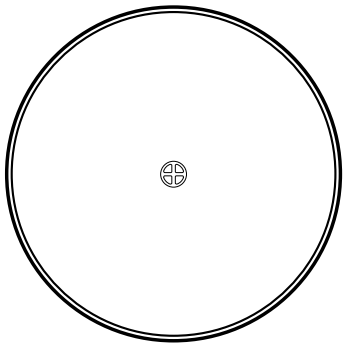
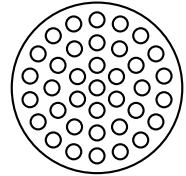
**X BASIN**  
**original**

The signature of the X-shaped drain detail is milled directly into the cast basin. □  
This detail offers an elegant and unique focal point for the LF Basin.



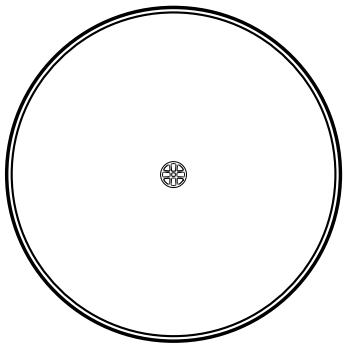
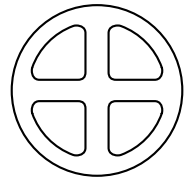
**O BASIN**  
**original**

The O-shaped drain detail is fitted with a recessed strainer and can □  
be plugged with a rubber stopper. The O Basin is not compatible □  
with pop-up drain hard-ware.



**O-4 BASIN** □  
**removable drain**

The O-4 drain sits just below flush to the bottom of the basin for easy flow, □  
and resembles the "X" or "+" detail, depending on how you place the □  
Basin. The drain can be removed, is compatible with the cast Basin □  
material, and will age similarly. Available in white bronze, □  
silicon bronze, brass and stainless steel, in satin finish only.



**O-9 BASIN**  
**removable strainer**

The O-9 drain sits just below flush to the bottom of the basin for easy flow. □  
The drain can be removed, is compatible with the cast Basin material, □  
and will age similarly. Available in white bronze, silicon bronze, brass □  
and stainless steel, in satin finish only.

